

# CASINO ENVIRONMENTS

coriander   
DESIGNS



 Contract Holder

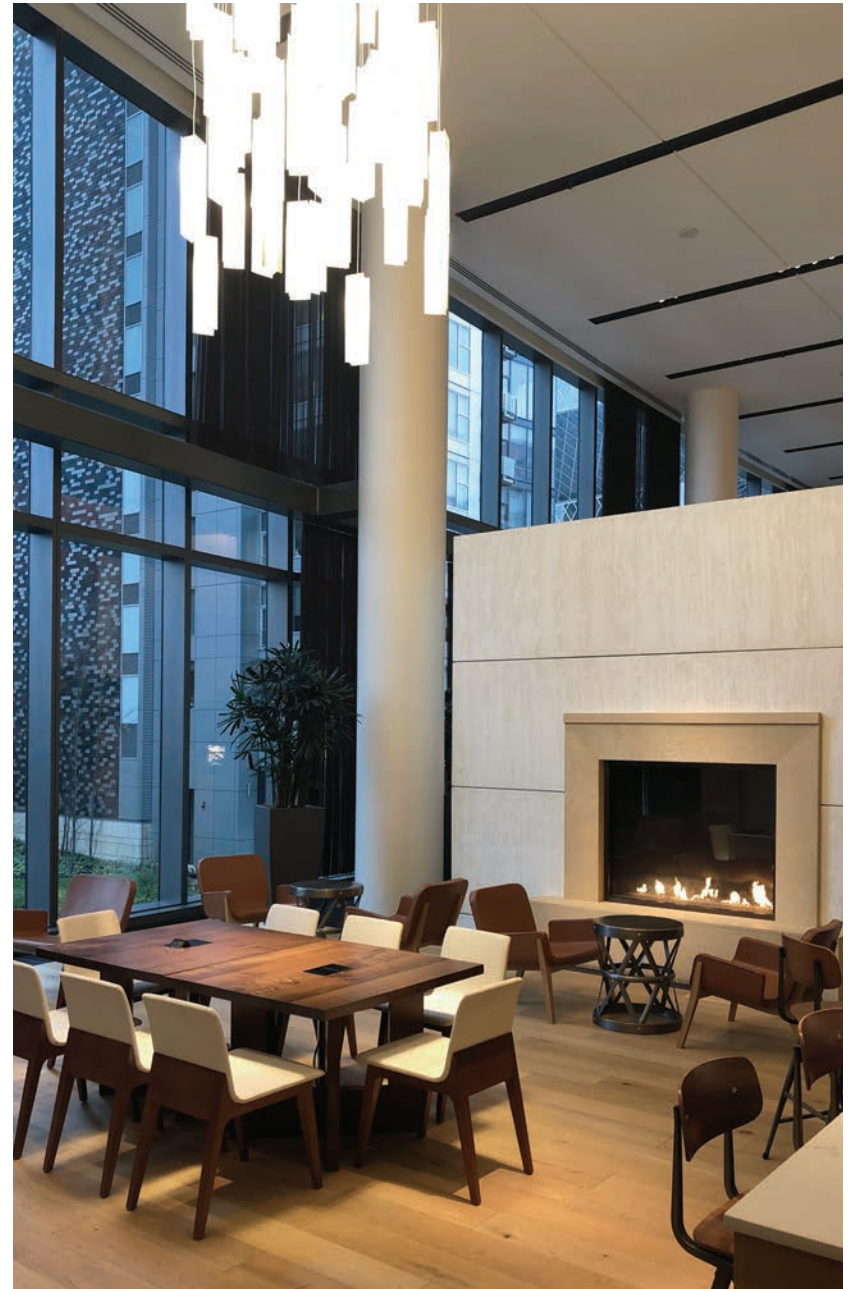


# elevated design

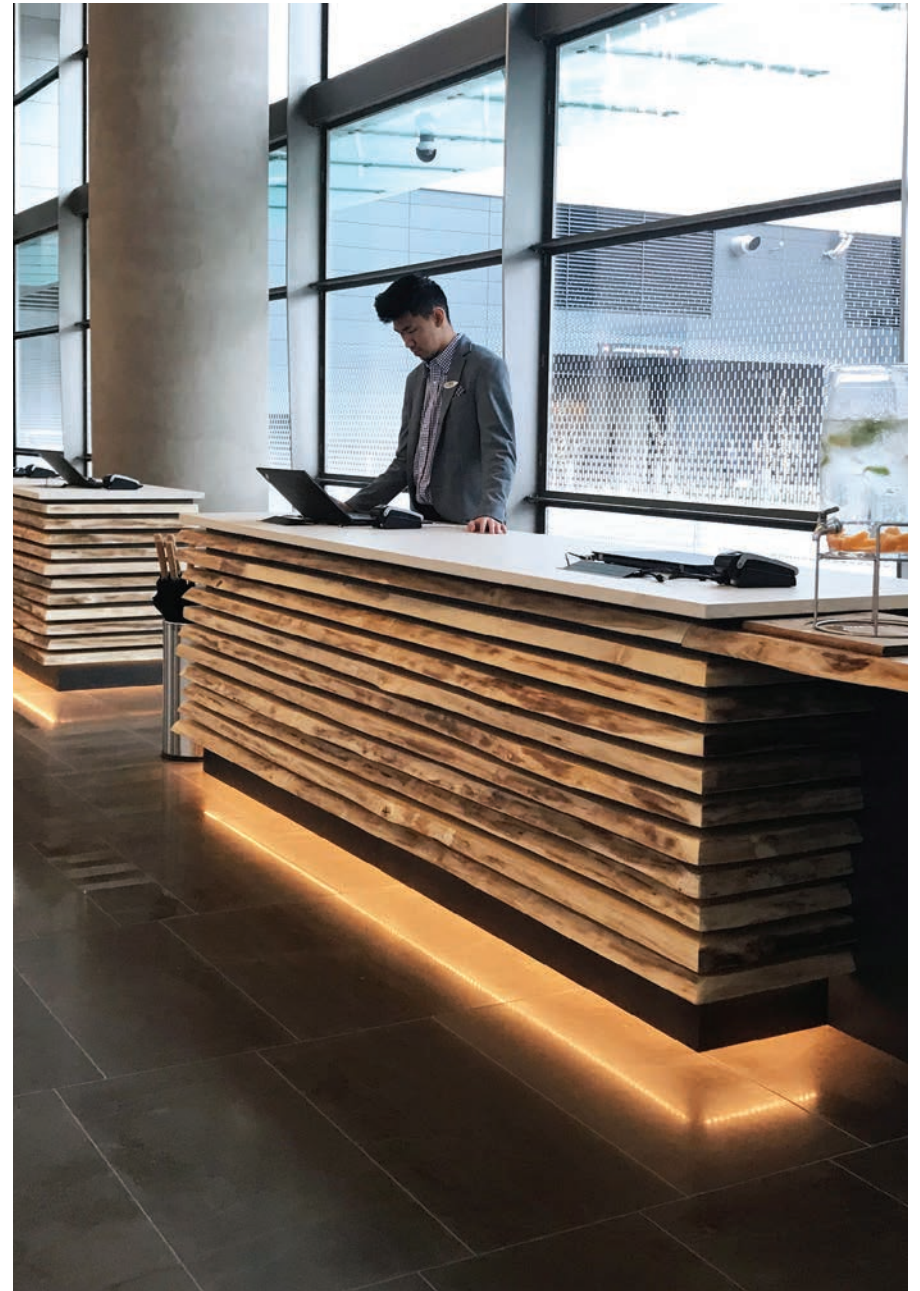
Our extensive experience designing furniture to meet customer aspirations while maintaining the fundamentals of holistic care is simply and affectively achieved.

Any standard or custom product can be manipulated to meet a project's precise requirements, be they fire retardants, non-ferrous fasteners, increased weight capabilities, elevated seats, moisture barriers, UV inhibitors and bleach cleanable finishes.

We also offer anti-microbial solid surface options that can be bonded to arm caps and used as surfaces for any of our tables or counter tops to ensure a sterile, safe and beautiful environment. From reception areas to guestrooms, Coriander Designs is your partner for elevated design.



# capabilities: reception + lobby



Concierge & Reception Desks crafted with Live Edge Maple and Metal with Lighting + Solid Surface Tops



# capabilities: reception + lobby



Solid Wood Side Tables + Coffee Tables



# capabilities: reception + lobby



Solid Wood Live Edge Community Tables with Integrated Data Units



# capabilities: lounge + restaurant



Bar Height Solid Wood Round Tables on Steel Base; Planked Ash Tables; Planked Live Edge Maple Table



capabilities: lounge + restaurant



Booth Banquette Seating, Side Chairs + Cafe Tables



# capabilities: lounge + restaurant



Banquette Seating + Bar Tables; Cafe Tables



capabilities: lounge + restaurant



Booth Banquette Seating, Side Chairs + Cafe Tables



# capabilities: guest rooms + suites



Cabinetry + Wet Bar with Integrated Sink; Bed Frames + Nightstands



capabilities: guest rooms + suites



Dining Table + Chairs



# capabilities: guest rooms + suites



Dining Table + Chairs; Bed Frame, Nightstand + Settee; Custom Belltown Lounge Chair; Armoire with Drawers



# capabilities: guest rooms + suites



TV Cabinet with Drawers, Side + Coffee Tables; Lounge Chairs + Sofa



# the coriander standard



## QUALITY

We are proud to manufacture all our products in America. Since 1979, our commitment to keeping all production in the USA has resulted in a smaller eco-footprint, local job creation and long term manufacturing stability. Our 44,000 square foot factory in Woodinville, Washington is fully equipped to handle all our clients' needs efficiently and effectively. With total control over our materials and all of our labor force working together under one roof, we are confident that all the products that leave our factory floor are made with the highest quality and built to last.



## FUNCTIONALITY

As with most of our products, our case good collections offer a multitude of size and configuration options. All three collections can be personalized with one of our 17 standard finishes and 9 edge profiles. Each collection also offers additional free-standing storage options. We can also implement height adjustable functionality and integrated data units for comfort and connectivity all at reach. Custom options are also available.



## SAFETY

We understand the importance of maintaining a sterile environment in casino/high occupancy environments so we offer several options to keep guests and staff safe. Solid Surface is a nonporous, chemical and stain resistant surface that does not support the growth of bacteria. It can be bonded to many of our chair arm caps, creating a seamless transition on wood arms. Micoban antimicrobial protection can be added to our wood finish to inhibit the growth of stain and odor-causing bacteria 24/7. Our High Pressure Laminates offer an antibacterial surface through the use of silver phosphate glass that reduces the number of bacteria on the surface.



## SUSTAINABILITY

Coriander Designs practices preferable product manufacturing in that we use products or services that have a reduced effect on human health and the environment when compared with competing products or services that serve the same purpose. Our lumber is FAS Select Grade and locally and responsibly harvested. All our foam is CFC free and recyclable. We offer many fabric choices that are natural or made using reconstituted material. Our varnish is VOC compliant and free of Lead and Chomate. Additionally, we are able to follow through on LEED requirements should your project request or require certification.





coriander   
DESIGNS

[corianderdesigns.com](http://corianderdesigns.com)

GS-28F-014GA

[info@corianderdesigns.com](mailto:info@corianderdesigns.com)

425.402.8001

20485 144th Ave NE

Woodinville, WA 98072

